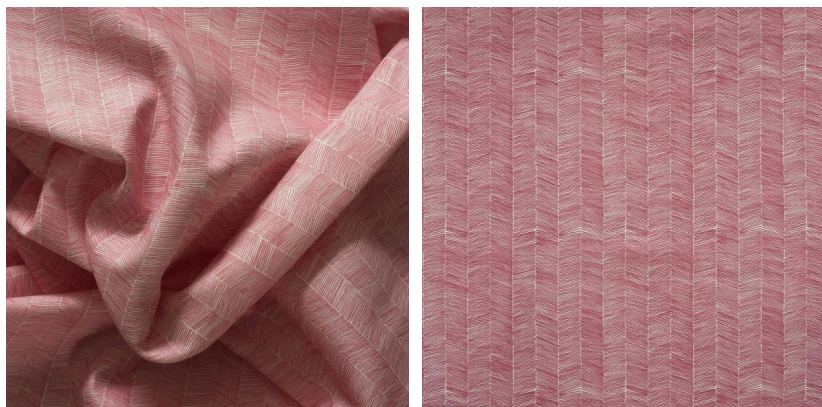


ANDREW MARTIN



Delta Tropic

Outdoor Fabric

Delta is a rustic herringbone print taking inspiration from the undulating surface and intricate patterns of this eponymous geographical feature. In vibrant pink, the slim, free hand lines zig zag across the fabric creating subtle areas of light and shade to give the print an organic, textured feel.

This fabric is part of our collection 'The Great Outdoors', it has a shower resistant finish which is anti-mould, anti-mildew and anti-microbial. Each fabric has been printed using EcoFast digital pigment printing methods, which use 50% less water than traditional print methods. As with most outdoor textiles, they prefer to be stored inside when they aren't being used, or during periods of wet, cold or damp weather.

This fabric can be FR treated to BS5852 Match Upholstery for indoor use.

Specification

Product Code:	TGODEOUTR
Width:	137 (cm)
Composition:	100% Polyester
Sold By:	Metre
Pattern Repeat (Vertical):	40.6 (cm)
Pattern Repeat (Horizontal):	137 (cm)
End Use:	Upholstery, Cushions
Care Instructions:	Professional Dry Clean Only
Martindale / Rub Test:	50,000
Flame Code:	Cig Only
Weight:	448 (gsm)
Collection:	The Great Outdoors Patternbook
EU Commodity Code:	54075400
US Commodity Code:	5407540000
Country of Origin:	United Kingdom
Indoor & Outdoor:	FR Treatable to BS5852 Match Upholstery for Indoor use

