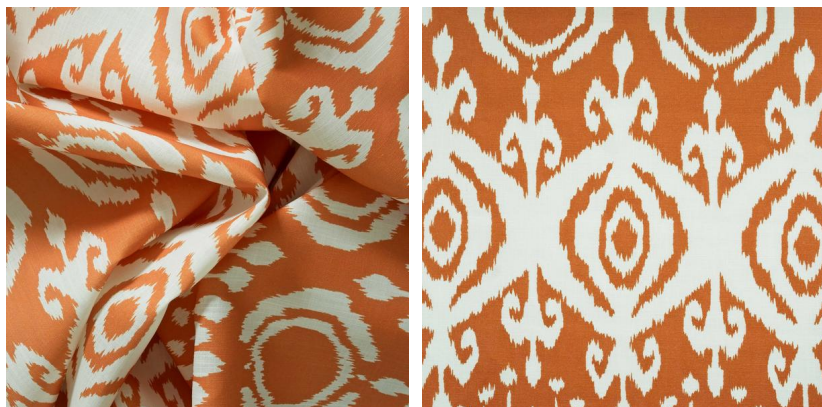


# ANDREW MARTIN



## *Volcano Lava*

### Outdoor Fabric

Volcano is a bold yet elegant ikat style design, inspired by the traditional ikat prints of Indonesia. The rounded shapes and flowing lines feel relaxed and organic, creating the perfect compliment to any outdoor space.

This fabric is part of our collection 'The Great Outdoors', it has a shower resistant finish which is also anti-mould, anti-mildew and anti-microbial. Each fabric has been printed using EcoFast digital pigment printing methods, which use 50% less water than traditional print methods. We do recommend however, that this fabric is looked after carefully and best used in dry weather. As with most outdoor textiles, it should be stored inside when not in use, or during periods of wet, cold or damp weather.

**This fabric can be FR treated to BS5852 Match Upholstery for indoor use.**

### *Specification*

Product Code:	TGOVOLOULAV
Width:	137 (cm)
Composition:	100% Polyester
Sold By:	Metre
Pattern Repeat (Vertical):	68.6 (cm)
Pattern Repeat (Horizontal):	137 (cm)
End Use:	Upholstery, Cushions
Care Instructions:	Professional Dry Clean Only
Martindale / Rub Test:	50,000
Flame Code:	Cig Only
Weight:	448 (gsm)
Collection:	The Great Outdoors Patternbook
EU Commodity Code:	54075400
US Commodity Code:	5407540000
Country of Origin:	United Kingdom
Indoor & Outdoor:	FR Treatable to BS5852 Match Upholstery for Indoor use

